

2025 POINT IN TIME (PIT) COUNT FIRST COMMUNITY MEETING

Santa Clara County Continuum of Care
Laura Urteaga-Fuentes, CoC Lead Manager
Leila Qureishi, CoC Data Team



AGENDA

Overview of PIT Count

- What it is
- Who is involved
- Purpose of community meetings

PIT data

- 2023 PIT data
- How we use PIT data

PIT Count planning timeline

Questions

- Next community meeting (10/23, 11 am-12pm on [zoom](#))



WHO'S HERE?

In the chat, please share:

- Name, pronouns
- Organization, if any
- Respond to the question that applies to you:
 - If you participated in past PIT Counts – what did you enjoy about it?
 - If new to PIT Count – what are you excited about?



WHAT IS THE POINT-IN-TIME COUNT?

A count of sheltered and unsheltered people experiencing homelessness on a single night

- HUD requirement
- Conducted in the last 10 days of January
- Each Count is planned, coordinated, and carried out locally
- Annual count of people experiencing homelessness who are sheltered (emergency shelter, transitional housing, safe havens)
- Every other year count of unsheltered people experiencing homelessness



PURPOSE OF THE PIT COUNT



Assists the CoC in understanding trends



Increase community understanding



Valid & accurate data that meets federal data reporting requirements



Retain & increase funding



Link to strategic, program & policy planning



DEFINITIONS USED FOR PIT COUNT

HUD definition of homelessness for individuals and families:



Sheltered Count: Living in a supervised publicly or privately operated shelter designated to provide temporary living arrangement.

OR



Unsheltered Count: With a primary nighttime residence that is a public or private place not designed for or ordinarily used as a regular sleeping accommodation for human beings, including a car, park, abandoned building, bus or train station, airport, or camping ground.



SANTA CLARA COUNTY'S PIT COUNT PROCESS

- **Count occurs in all 15 cities and unincorporated areas of Santa Clara County**
- **Unsheltered count is conducted by teams comprised of volunteers paired with guides**
 - Guides are people with lived experience; role is paid
 - Teams use an app to collect survey information

- **Counts in 2025 will include:**
 - **Unsheltered count**
 - **Unsheltered youth count** typically conducted in afternoon when youth are likely to be more visible. Youth outreach workers are paired with youth guides with lived experience
 - **Sheltered count** Emergency Shelter and Transitional Housing count using HMIS data
 - **Institution count** DV shelters and other shelters not participating in HMIS, emergency department in hospitals, buses, School district McKinney-Vento liaisons



WHO IS INVOLVED?

Entity	Role
<p>Continuum of Care Lead</p> <p>Charged with meeting all HUD requirements, including conducting an annual PIT Count</p>	<p>Oversight & implementation, including all HUD requirements</p> <p>Planning & logistics alongside vendor & community</p> <p>Recruitment and engagement of key stakeholders and partners</p> <p>Complete required HUD reporting</p>
<p>Community & Volunteers</p> <p>Individuals with lived experience, City partners, County partners, outreach providers, other service providers, etc.</p>	<p>Provide input during planning process</p> <p>Stay informed</p> <p>Share information with others</p> <p>Recruit volunteers</p> <p>Volunteers: Complete trainings, conduct count, administer surveys</p>
<p>PIT Count Vendor</p> <p>Provides support and technical assistance in PIT Count planning and implementation</p>	<p>Provide tools and technical assistance for data collection</p> <p>Provide virtual trainings and materials</p> <p>Manage volunteer registration portal and mobile app</p> <p>Complete data analysis resulting in report and dashboard</p>
<p>Jurisdictional Leads</p> <p>Identified leads in each jurisdiction to act as a liaison between their locality and the PIT Count effort</p>	<p>Provide input during planning process</p> <p>Recruit and support local volunteers during PIT Count</p> <p>Complete trainings</p> <p>Work with local outreach teams to identify hot spots in their area</p> <p>Accountability and ownership of local data</p>




PURPOSE OF COMMUNITY MEETINGS

 Plan PIT Count together

 Get up to date on PIT Count information (e.g. training information)

 Identify hot spots

 Get input/feedback (e.g. finalizing questionnaire)

 Volunteer recruitment and support



POINT IN TIME COUNT TREND

Point-in-time Census, 2009-2023

**2023 TOTAL
PIT COUNT**

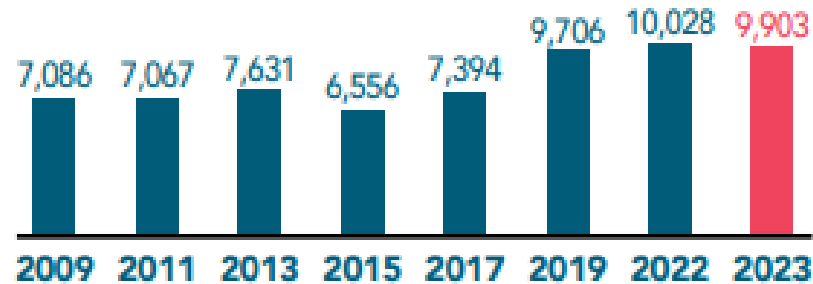
9,903

25% SHELTERED



75% UNSHELTERED

**CENSUS POPULATION
LONGITUDE TREND**



2023 POINT IN TIME COUNT SUMMARY

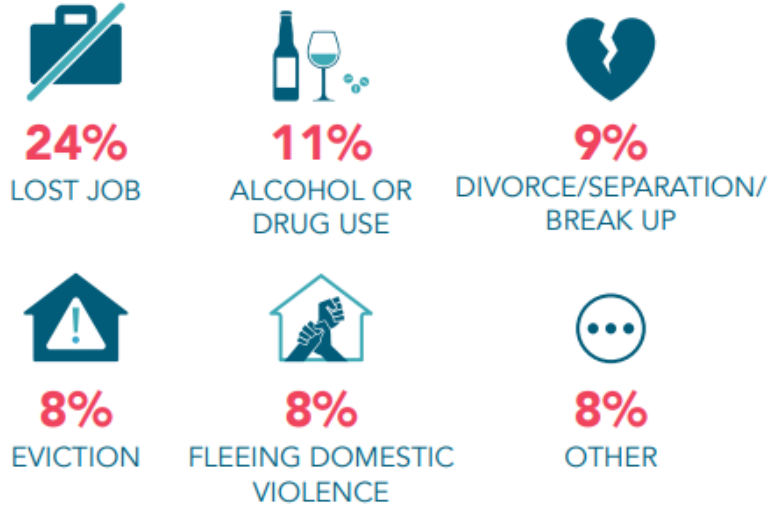
- The overall number of homeless people remained relatively steady with a 1.2% decrease countywide.
- At the same time, there was a 4% decrease in the number of unsheltered individuals. This trend coincided with a nearly 8% increase in sheltered individuals as jurisdictions across the community have expanded interim housing and temporary shelter options over the past few years.



2023 PIT COUNT SURVEY RESULTS

PRIMARY CONDITION THAT LEAD TO HOMELESSNESS

TOP 6 RESPONSES



CONDITIONS THAT MAY HAVE PREVENTED HOMELESS

TOP 4 RESPONSES



FAMILIES



YOUTH



VETERANS



AGE AT FIRST EPISODE OF HOMELESSNESS

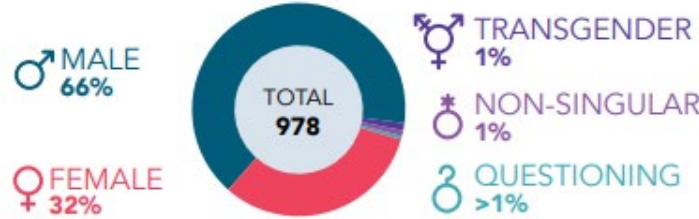


CURRENT ACCOMMODATION

TOP 4 RESPONSES

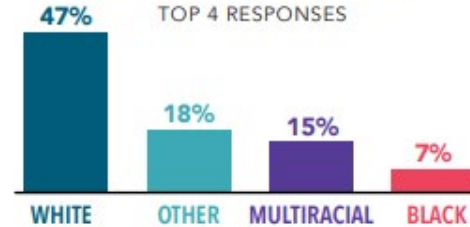


GENDER



RACE

TOP 4 RESPONSES



ETHNICITY



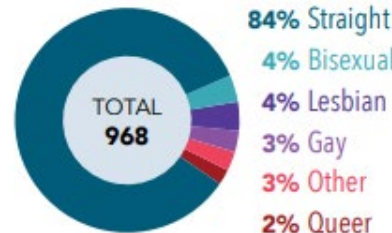
FIRST EPISODE OF HOMELESSNESS



DURATION OF CURRENT EPISODE OF HOMELESSNESS



SEXUAL ORIENTATION



PREGNANT



NUMBER OF EPISODES OF HOMELESSNESS IN THE PAST 3 YEARS



GEOGRAPHIC DATA

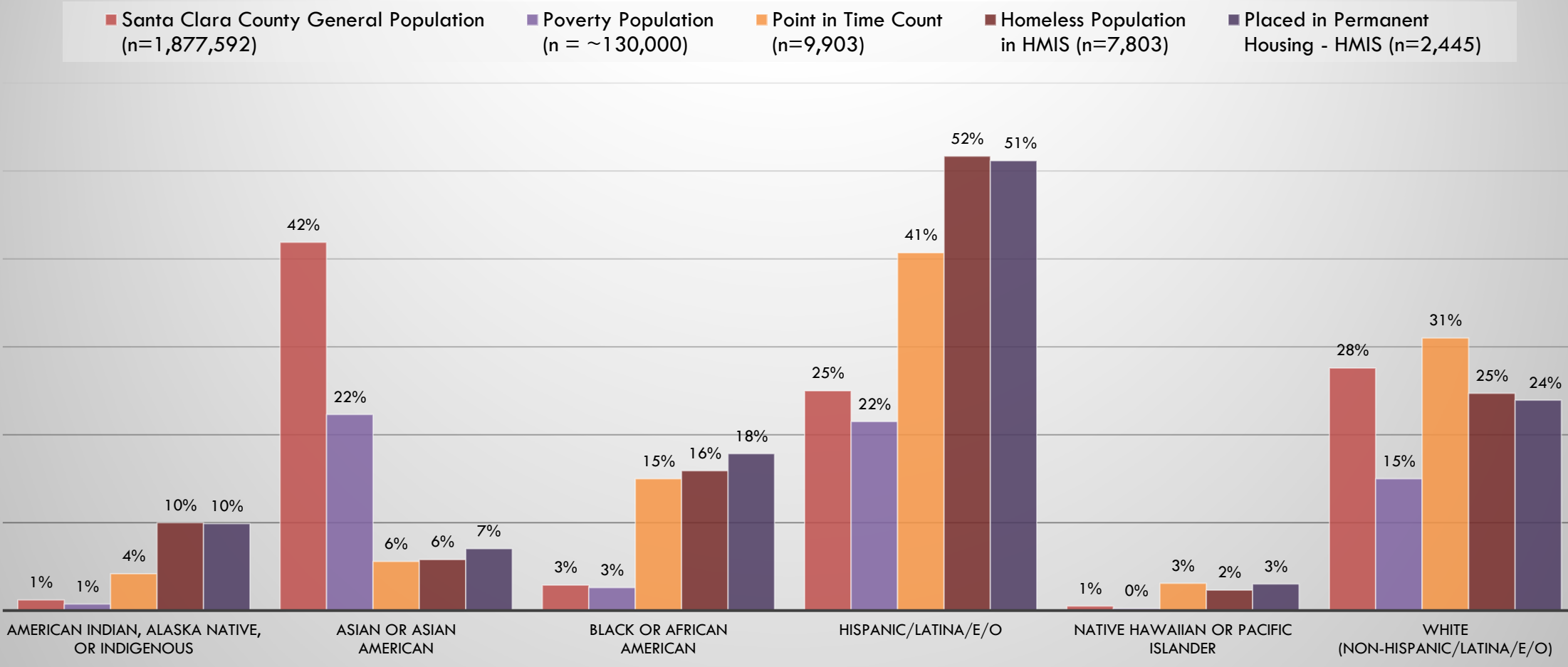
JURISDICTION	UNSHELTERED			SHELTERED			TOTAL			2019-2023	2022-2023
	2019	2022	2023	2019	2022	2023	2019	2022	2023	% CHANGE	% CHANGE
Total Incorporated	7,640	7,454	7,169	1,594	2,230	2,438	9,234	9,684	9,607	4%	-1%
Campbell	74	216	92	0	0	0	74	216	92	24%	-57%
Cupertino	159	102	48	0	0	0	159	102	48	-70%	-53%
Gilroy	345	606	817	359	208	231	704	814	1,048	49%	29%
Los Altos	76	65	0	0	0	0	76	65	0	-100%	-100%
Los Altos Hills	0	0	0	0	0	0	0	0	0	*	*
Los Gatos	16	58	81	0	0	0	16	58	81	406%	40%
Milpitas	125	249	142	0	25	0	125	274	142	14%	-48%
Monte Sereno	0	0	0	0	0	0	0	0	0	*	*
Morgan Hill	114	60	230	0	0	0	114	60	230	102%	283%
Mountain View	574	206	424	32	140	138	606	346	562	-7%	62%
Palo Alto	299	263	187	14	11	19	313	274	206	-34%	-25%
San José	5,117	4,975	4,411	980	1,675	1,855	6,097	6,650	6,266	3%	-6%
Santa Clara	264	375	417	62	65	44	326	440	461	41%	5%
Saratoga	0	0	0	0	0	0	0	0	0	*	*
Sunnyvale	477	279	320	147	106	151	624	385	471	-25%	22%
Total Unincorporated	282	254	232	89	27	2	371	281	234	-37%	-17%
Confidential Locations	NA	NA	NA	101	63	62	101	63	62	-39%	-2%
Total	7,922	7,708	7,401	1,784	2,320	2,502	9,706	10,028	9,903	2%	-1%

* Cities with unsheltered or sheltered populations <11 in a given year were moved to Unincorporated due to small sample size

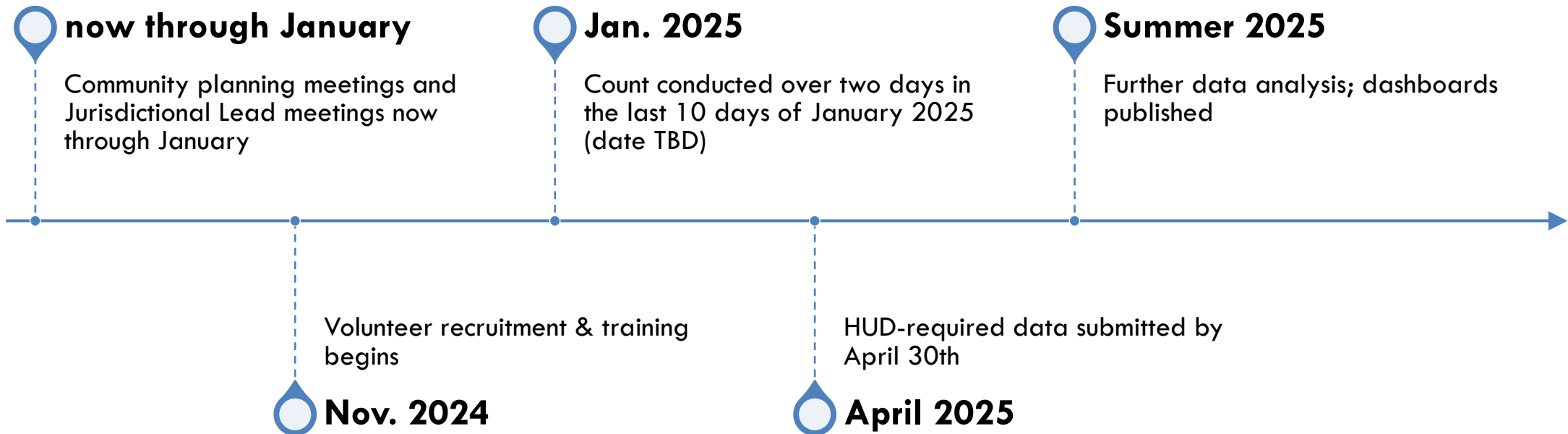


RACIAL DISPARITIES WITH 2023 PIT COUNT RESULTS

Racial Disparities in Santa Clara County, CY2023



TIMELINE



QUESTIONS?

Next community meeting:
10/23, 11 am-12pm

[Zoom link here](#)

[PIT Updates:](#)

<https://osh.sccgov.org/2025-PIT>

[Leila Qureishi](#)

Leila.Qureishi@hhs.sccgov.org

650-283-2419