

2023 YEAR END PROGRESS REPORT

The systemic factors driving homelessness are stronger than ever, and forcing more of our community members onto the streets and into shelters every day. The 2020-2025 Community Plan to End Homelessness guides our community's collective work to reverse the current growth in homelessness and bring us closer to our goal of ending homelessness in Santa Clara County. We are forging new partnerships, changing systems, and investing strategically to accomplish meaningful progress, however, we must continue to scale up these effective solutions to reduce overall homelessness in our community. To learn more visit destinationhomesv.org/community-plan

OUR GUIDING STRATEGIES:



STRATEGY 1

Address the root causes of homelessness through system and policy change



STRATEGY 2

Expand homelessness prevention and housing programs to meet the need



STRATEGY 3

Improve quality of life for unsheltered individuals and create healthy neighborhoods for all

OUR PROGRESS TO DATE



13,817

People Housed

2025 goal: 20,000 People Housed



24% Increase in

New Households Becoming Homeless in 2023

SYSTEM PERFORMANCE



*includes people served via Covid-related Financial Assistance

In 2023,



For every
1 household
housed



another
1.7 become
homeless

KEY INITIATIVES

BUILDING MORE PERMANENTLY AFFORDABLE HOUSING

Our community is aligning public resources — like the Measure A housing bond, Housing Authority vouchers and San Jose's Measure E transfer tax — and private funds from partners such as Cisco and Apple, to spur 56 deeply affordable and supportive housing developments.



More than
5,800 homes
are open, under
construction or
in the pipeline

PREVENTING HOMELESSNESS

Launched as a pilot five years ago, a broad public-private partnership has expanded the countywide Homelessness Prevention System to serve more than 2,400 households a year, by providing at-risk households with relatively small amounts of money and key support services.



95% of
households
remained stably
housed while
enrolled

DEPLOYING NEW SHELTER MODELS

Local jurisdictions are embracing new emergency and interim shelter models - like modular developments, tiny homes and hotel conversions - to quickly provide dignified shelter for people on their path to permanent housing. Hundreds of additional units are in development.



Shelter
options have
grown **44%**
since 2020

ENDING FAMILY HOMELESSNESS

In 2021, partners launched the HEADING HOME campaign to end family homelessness. Leveraging federal emergency housing vouchers and other resources, the campaign has enrolled all eligible families with children in a housing program.



More than
1,500 families
connected to
permanent
housing

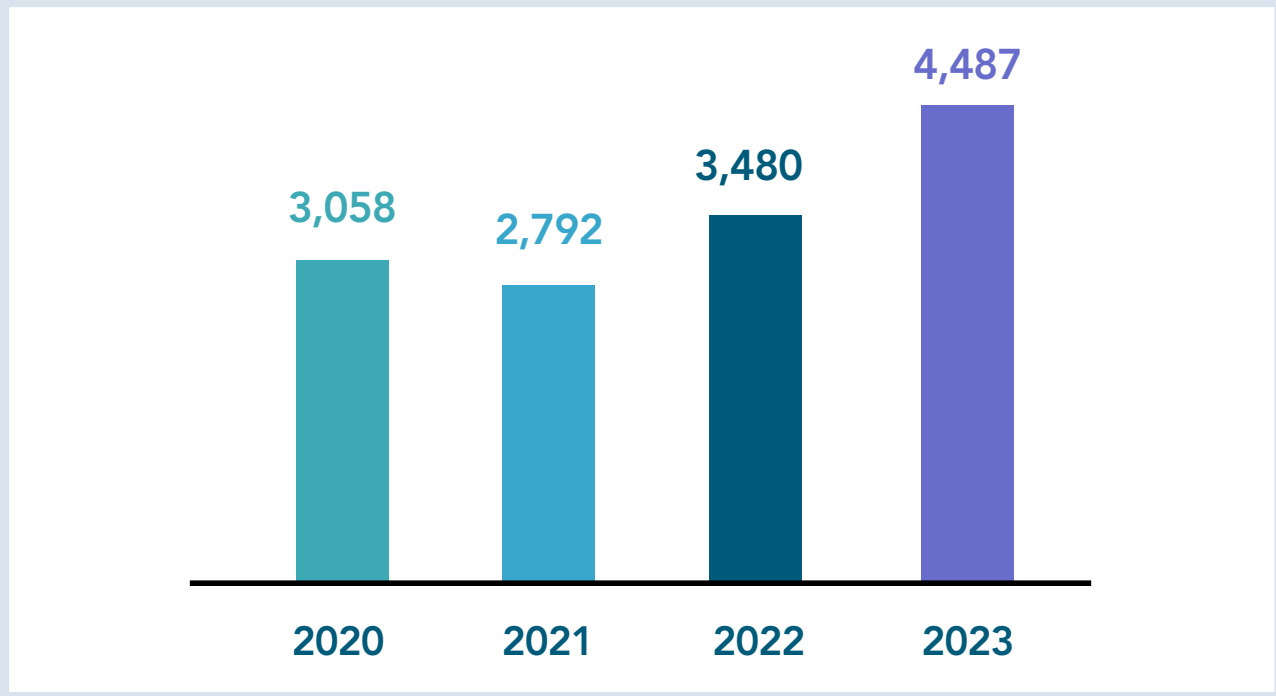
2023 YEAR END PROGRESS REPORT



13,817 People Housed

2025 goal: 20,000 People Housed

PEOPLE HOUSED BY YEAR



KEY SUB-POPULATIONS



28%
Families w/ Children



14%
Veterans

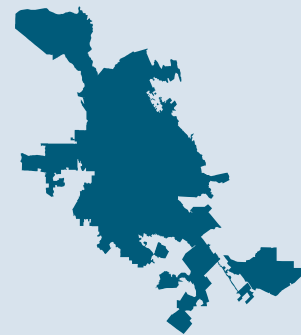


12%
Transition-Age Youth



10%
Seniors (65+)

*Based on number of households housed



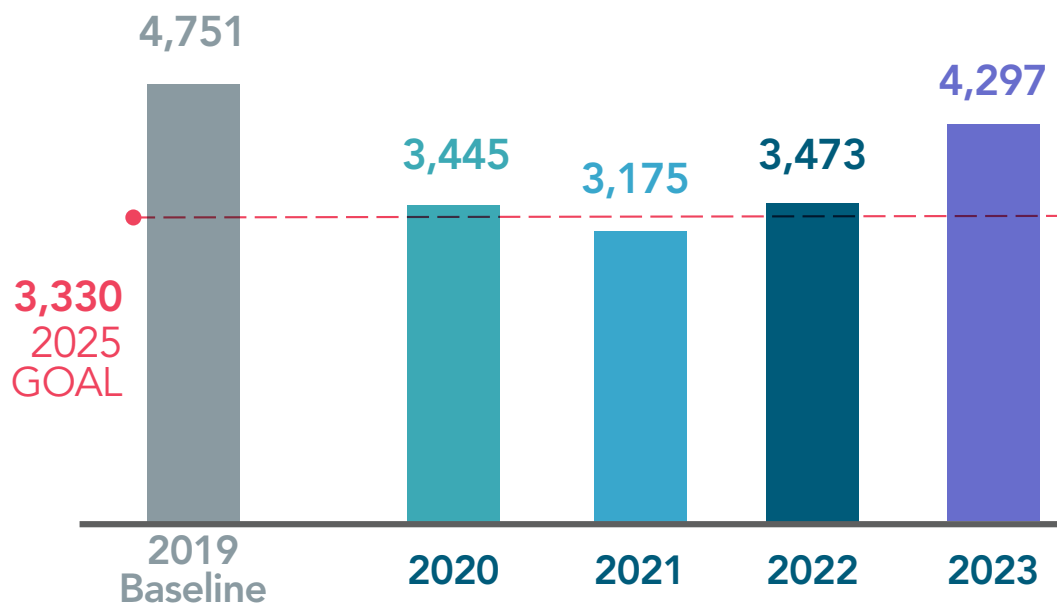
81%
have a San José
affiliation

2023 YEAR END PROGRESS REPORT



24% Increase in New Households Becoming Homeless in 2023

NEW HOUSEHOLDS ENTERING HOMELESSNESS BY YEAR



WHO IS SEEKING HELP?



24%
Families w/ Children



17%
Transition-Age Youth



5%
Seniors (65+)



3%
Veterans

2023 YEAR END PROGRESS REPORT

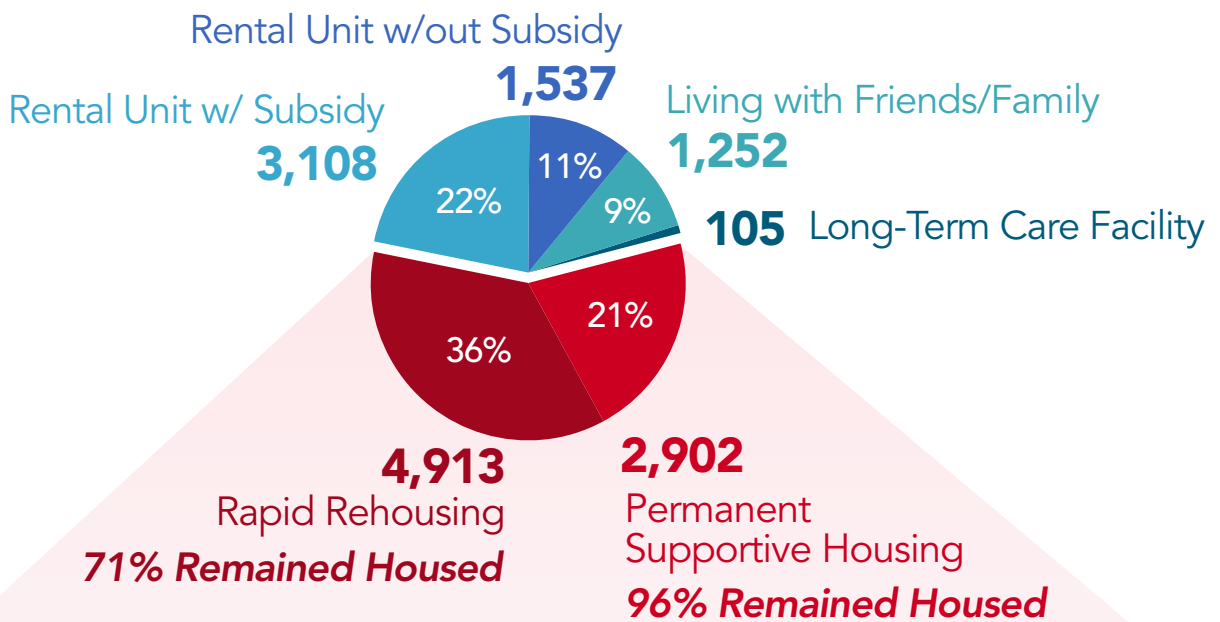


SYSTEM PERFORMANCE

Permanent Housing

PEOPLE ASSISTED

13,817 People Connected to Stable Housing



EXPANDING OUR SYSTEM

Supportive Housing Capacity*

5,561 units/subsidies

↑ 12% since Jan. 1, 2020

1,126 units in the pipeline

*Includes Rapid Rehousing & Permanent Supportive Housing

Data reflects progress from Jan. 1, 2020 - Dec. 31, 2023

2023 YEAR END PROGRESS REPORT



SYSTEM PERFORMANCE

Temporary Housing & Shelter

PEOPLE ASSISTED

19,575 People Placed in Temporary Housing & Shelter

EXPANDING OUR SYSTEM

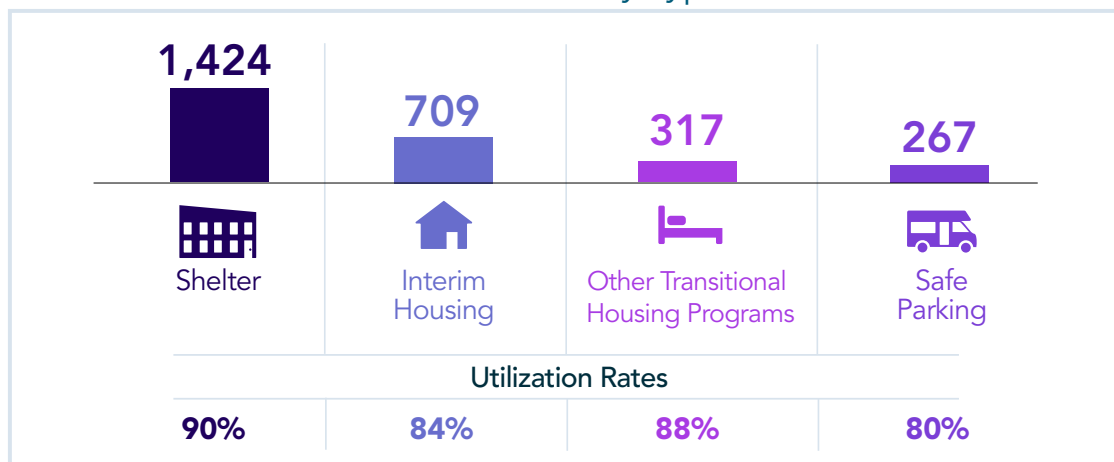
Temporary Housing & Shelter Capacity

2,717 units

↑44% since Jan. 1, 2020

384 units in the pipeline

Breakdown by Type



In 2023, **25% of all people** served in temporary housing & shelter exited to **permanent housing**.



3/4 of those connected to housing did so with the help of a subsidized housing program.

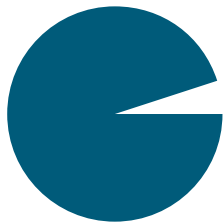
2023 YEAR END PROGRESS REPORT



SYSTEM PERFORMANCE Homelessness Prevention

PEOPLE ASSISTED

28,235 People Received
Homelessness Prevention Assistance



95% of families
remained stably
housed while
receiving services.



ONE YEAR LATER

→
Only 5%
of households
became homeless.

EXPANDING OUR SYSTEM

Homelessness Prevention Capacity

2,487 households

↑ 61% since Jan. 1 2020

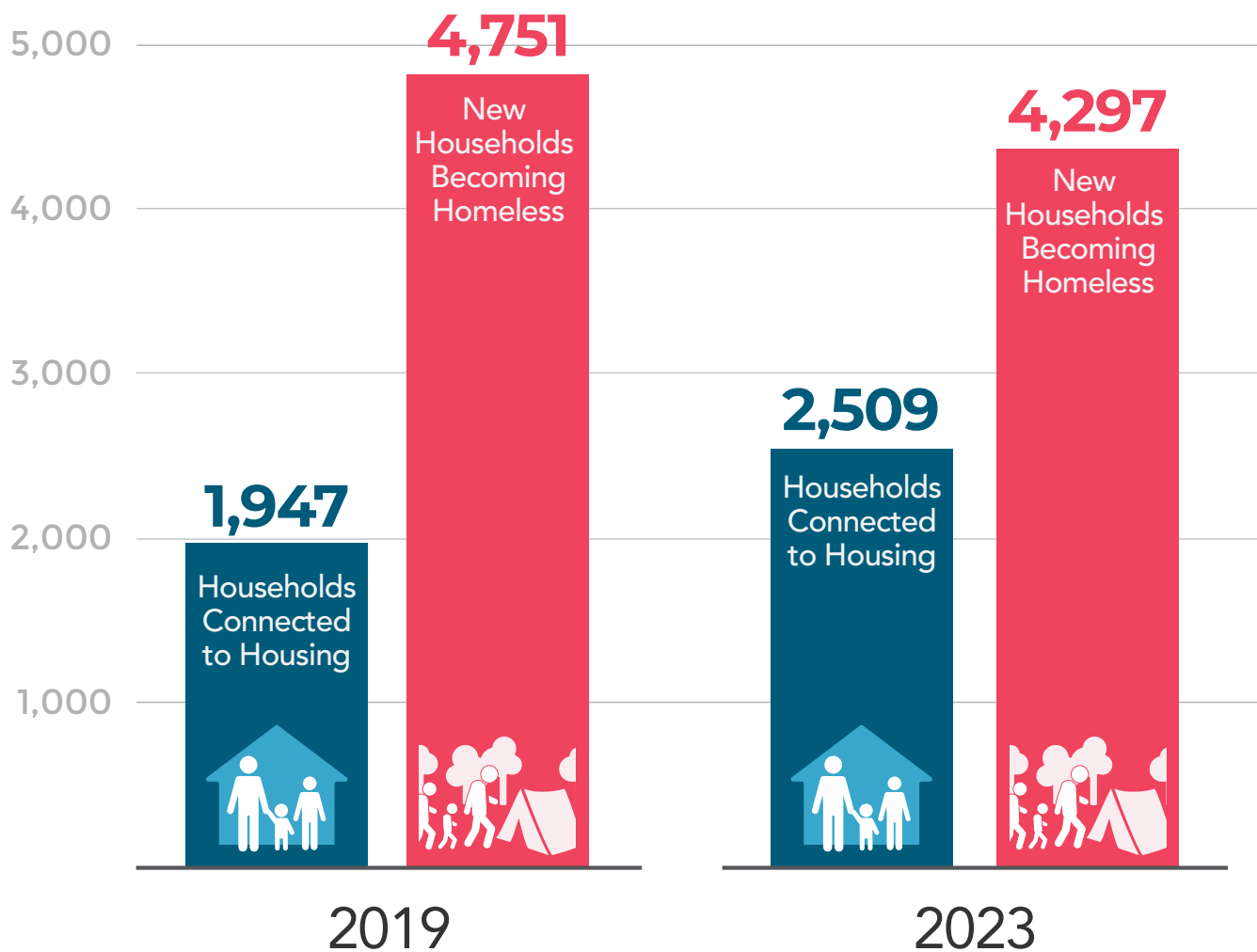
Plans to reach **2,500 households**

*Total people assisted includes those served via temporary COVID-related financial assistance; outcome stats are for ongoing Homelessness Prevention programs only

2023 YEAR END PROGRESS REPORT

NARROWING THE GAP TO 'FUNCTIONAL ZERO'

Households Connected to Housing VS New Households Becoming Homeless



For every **1** household housed, another **2.5** became homeless

For every **1** household housed, another **1.7** became homeless