

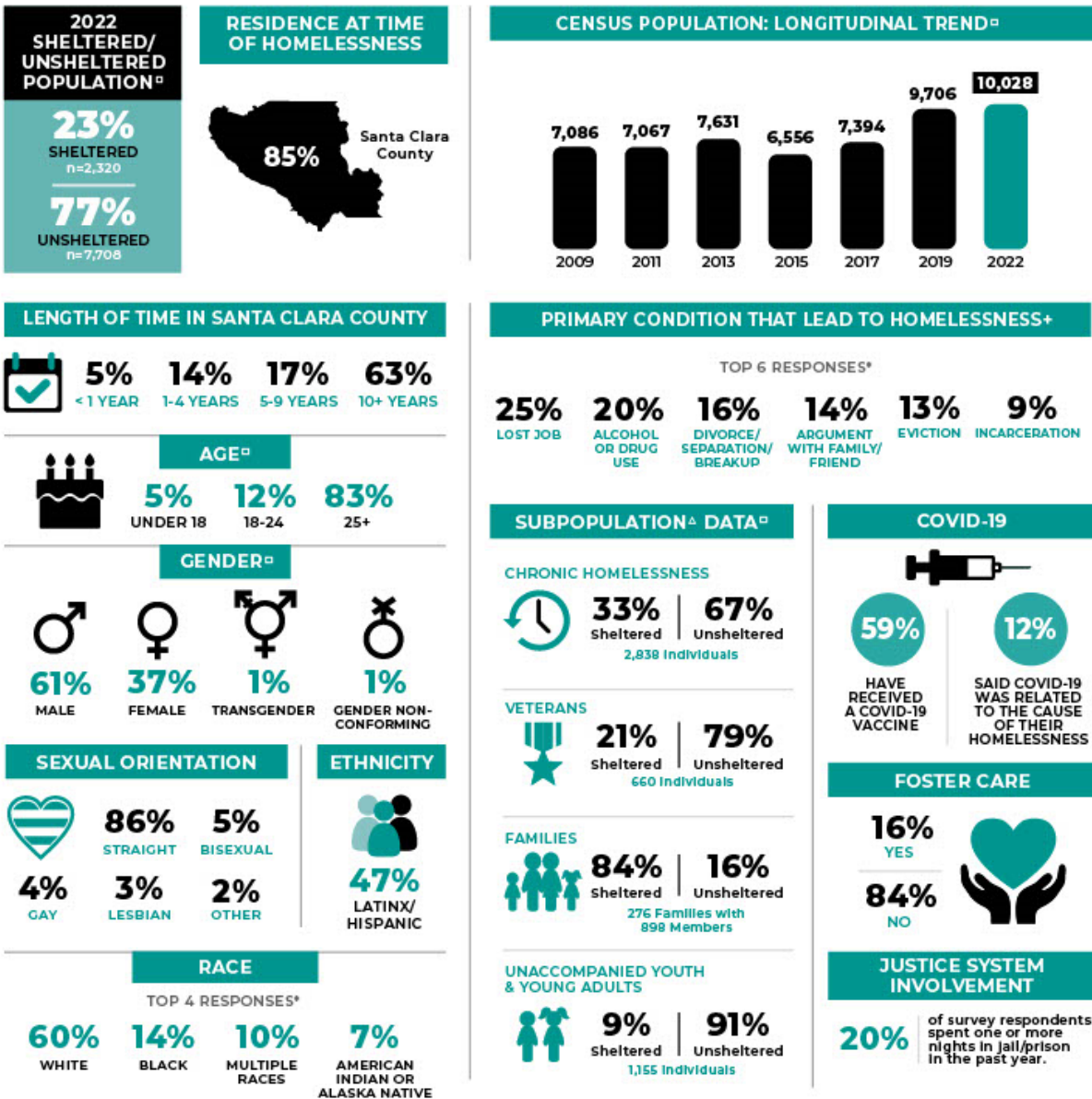
EXECUTIVE SUMMARY

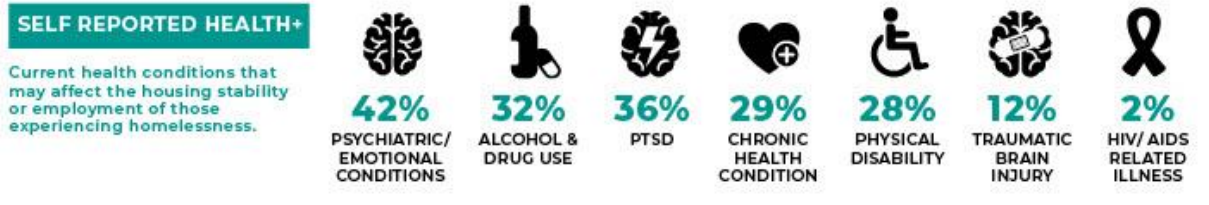
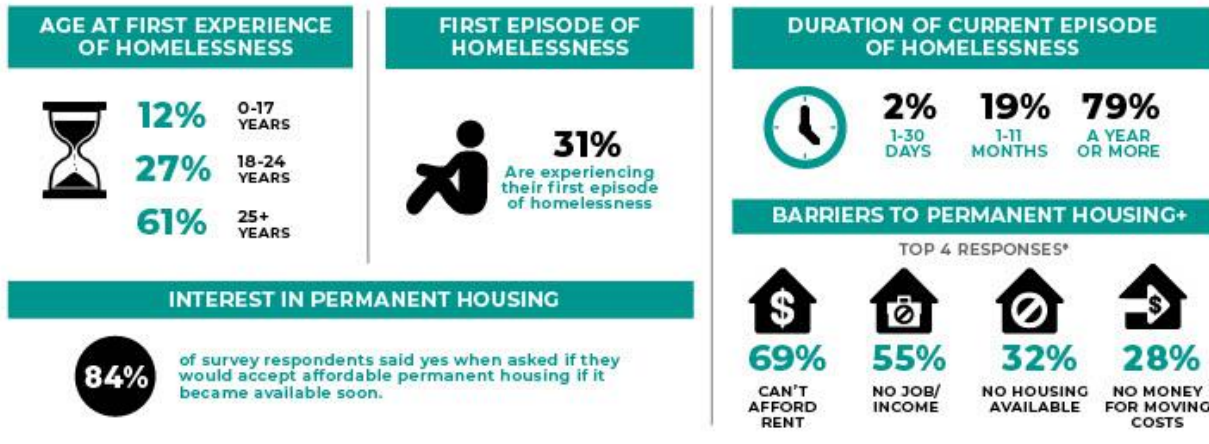
SANTA CLARA COUNTY

2022 HOMELESS POINT-IN-TIME COUNT & SURVEY

Every two years, during the last 10 days of January, communities across the country conduct comprehensive counts of the local homeless populations in order to measure the prevalence of homelessness in each local Continuum of Care.

The 2022 Santa Clara County Point-in-Time Count was a community-wide effort conducted on February 23rd and 24th, 2022. In the weeks following the street count, a survey was administered to 1,118 unsheltered and sheltered individuals experiencing homelessness in order to profile their experience and characteristics.





△ SUBPOPULATION DEFINITIONS

CHRONICALLY HOMELESS
An individual with one or more disabling conditions or a family with a head of household with a disabling condition who:
 » Has been continuously homeless for 1 year or more and/or;
 » Has experienced 4 or more episodes of homelessness within the past 3 years.

VETERANS
Persons who have served on active duty in the Armed Forces of the United States. This does not include inactive military reserves or the National Guard unless the person was called up to active duty.

FAMILIES
A household with at least one adult member (persons 18 or older) and at least one child member (persons under 18).

UNACCOMPANIED YOUTH & YOUNG ADULTS
Youth under the age of 18 and young adults between the ages of 18 and 24 years old (TAY) who are experiencing homelessness and living without a parent or legal guardian.

+ Multiple response question, results may not add up to 100%.
 * Only displaying top responses, all response data will be available in full report.
 - Sourced from census data rather than survey data.
 Note: Some percentages have been rounded so total percentage will equal 100%.

The complete comprehensive report includes a more detailed profile of the characteristics of those experiencing homelessness in Santa Clara County is available here: <https://bit.ly/2MmRg3j>
 Source: Applied Survey Research, 2022, Santa Clara County Homeless Census & Survey, Watsonville, CA.